

FOR LEASE: 434 SF Office Space

\$ 1.55 / SF / MONTH



contact Travis Henry, Property Manager

office: 503-585-8789

cell: 503-926-4613

email: travis@wildwoodco.com



The Old Pringle Schoolhouse 4985 Battlecreek Rd., SE Salem, OR 97302

Description:

Lease space features abundant natural light, operable windows and faces a beautiful and peaceful interior courtyard filled with native plantings; ideal space for architect/designer/draftsman, graphics firm, web design, computer repair, consultant, desk top publisher.

The Old Pringle Schoolhouse is an AIA award-winning sustainable rehabilitation of a historic elementary school building in Southeast Salem. Sustainable features include a 32kW solar array, Cradle to Cradle Certified gutter system, innovative storm water management and native, drought tolerant landscaping. Located less than one mile from Interstate 5, the property has excellent visibility and proximity to downtown Salem.

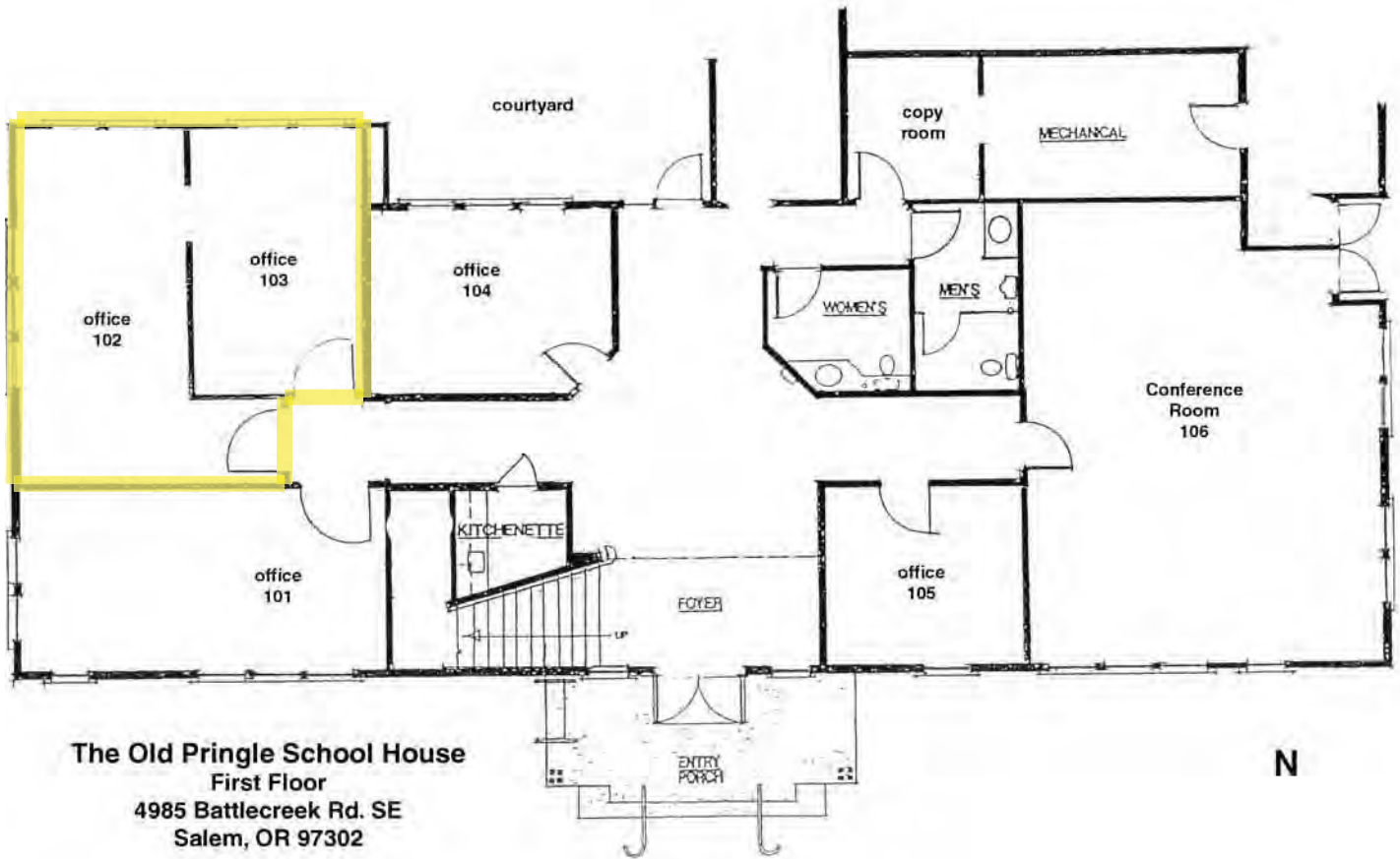
Current tenants include: sustainable land use planner/developer, native plant nursery/vineyard, attorney and commercial leasing office.

Current tenants potential customer base.

Property Highlights

- Located less than 1 Mile from Interstate 5 and minutes to downtown Salem.
- Utilities and taxes included in rent
- Color laser printer/copier (usage billed monthly)
- Ample parking for employees and customers.
- High-speed internet available
- Kitchenette
- Huge, 32kW solar array
- Beautiful courtyard with ADA access
- Large corporate conference (available by reservation) room with seating up to 40 people, conference calling, and projector.

Floorplan:



The Wildwood | Mahonia family of companies has a diverse range of activities: agriculture, urban planning and development, watershed restoration and international ventures. For over 35 years, our projects have been guided by nature as we design and build places for people to live, work, and play. We incorporate the latest in energy efficient building techniques and native compatible landscaping in order to protect and enhance our natural resources. Our approach to business includes active support of community programs, especially those benefitting children and the environment.